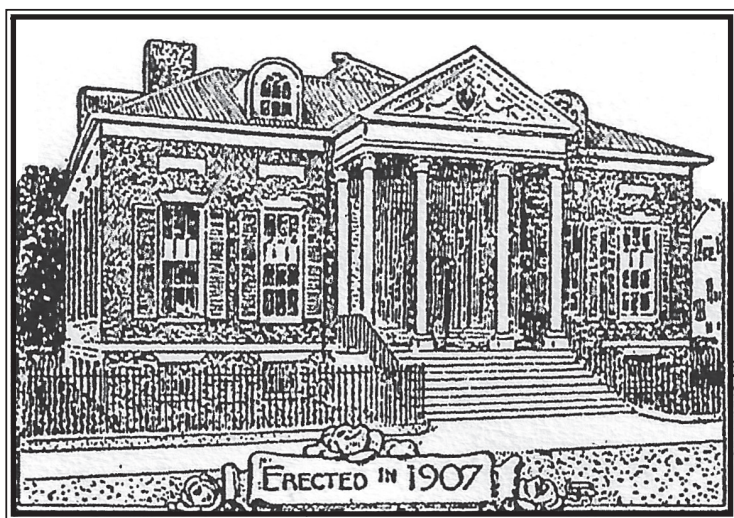


Salem Athenæum

Founded 1810

Inspired works, lively discourse, and serious fun for the entire North Shore



Annual Report

April 1, 2014–March 31, 2015

Board of Trustees and Staff

President
Meg Twohey

Vice-President
Ken Harris

Treasurer
Patrick F. Padden, Jr.

Clerk
Stephanie Buck

Trustees
Brunonia Barry
Abby Burns
Marla Gearhart
Sarah Harrington
David Hart
Richard Jendrysik
Steve Immerman
Judy Kearney
Angela Williams



Jean Marie Prociou, *Director*
Carolyn McGuire, *marketing coordinator*
Elaine von Bruns, *honorary curator*
Shari Caplan, *honorary writing program director*



Our Mission Statement
To preserve and excite the literary and
cultural passions of the North Shore

Contents

President's Letter	4
Director's Letter	5
Members and Collections.....	6
Programs and Events.....	8
Annual Report of Activities.....	10
Financial Position.....	12
Donors.....	14
Committees.....	17
Volunteers.....	18



For general information about the Athenæum
or its events, please contact the Director:

Jean Marie Procius
978-744-2540
info@salemathenaeum.net
www.salemathenaeum.net

Letter from the President

I want to take this opportunity to thank all Athenæum members for your ongoing support, which you demonstrate in so many ways: through your membership, your participation in events, your advocacy in the community, and your contributions throughout the year. We are deeply grateful for the generosity of everyone who contributes in so many ways that enable us to provide our members and community with services, collections and programs.

The newly formed Writers Group programs, combined with our continuing core programs, broadened our reach and won new audiences through workshops and participatory events and won new audiences. A partnership with the Boys and Girls Club staffed with student instructors from Salem State University last summer has evolved into a planned youth writing series at the Athenæum.

To help us align Board work with current needs, the Trustees created a Governance Committee that has worked with the trustees and a consultant to modernize board practices, supported by grants in 2014 and 2015 from the Essex County Community Foundation Center for Board Excellence.

We encourage you to share your thoughts with us and welcome you to participate in the life of the Athenæum in whatever way you can.

The vibrant life of the Athenæum would not be possible without your financial support. Last year, we also inaugurated corporate sponsorship and fund-a-need programs. This year, we are seeking ways to leverage our current assets and add development capacity.

Nothing the Athenæum does could be carried out without the dedicated service of our Director Jean Marie Prociuous, Carolyn McGuire, so many committed and talented volunteers, and our truly working Board of Trustees. The Trustees are especially grateful to departing Trustees Judy Kearney, Sarah Harrington and Ann Fisher Cook for their extraordinary service and to Sandra Heaphy who served four years as Vice-President, sustaining the Board through many transitions with grace.

Meg Twohey
President, Board of Trustees



Letter from the Director

I write my letter as I return from a quick trip to California to meet with my peers at the independent membership libraries annual meeting. Since the group's founding 25 years ago, several libraries have fallen away, but this year we welcomed an entirely new membership library! Folio: The Seattle Athenæum will open its doors later this year.

While Seattle's collections are still being gathered, and their space being set up, they plan to offer services like those you use every day: relevant cultural programming, a rich circulating collection, and a welcoming place for members to gather, read, and work.

We all feel pressure to live at a frenzied, tech-addicted, just-in-time pace, and it is good to connect with people you know (and those who you would like to) in a place where truth is not only found in non-fiction books but in stories, poetry and art. Aren't we fortunate to already have this at the Salem Athenæum?

However, none of this happens without effort. From the trustees and library volunteers giving their time to plan and carry out events, to a member bringing a dish or putting a chair away, to all of you giving your generous financial support, we depend for our sustenance on the community we have built. In return, we continually look for opportunities to better serve you – including expanding the definition of who constitutes our community.

As an example, we have begun assisting local writers by offering research support, a quiet place for work, and a community where they can share works in progress and celebrate successes achieved through publishing, performance or instruction. Our first year was successful, and these and other programs will continue to evolve and transform our offerings for years to come, allowing everyone to benefit from the creativity and talent of North Shore writers.

Jean Marie Procious
Director



Members and Collections

An Individual membership level was added to our Subscriber membership rates. This new option was a strong incentive—we welcomed 62 new memberships this year, up from 45 last year. The annual fee for an Individual Subscriber is \$85.00, and the yearly fee for Household Subscribers is \$105.00. The Proprietors Assessment is \$210.

Memberships

Individual Subscribers:	92
Household Subscriber Memberships:	133
Shares held by Proprietors:	100
Shares returned and re-issued:	3
Shares transferred:	1

Library Materials

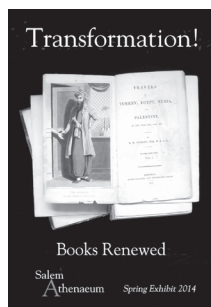
New books cataloged:	356
Existing books cataloged:	1246
(electronic catalog project)	
Periodical Subscriptions	27

Circulation

Fiction	1016
Non-Fiction	256
Periodicals	168
Children's	133
(In-library use not included.)	

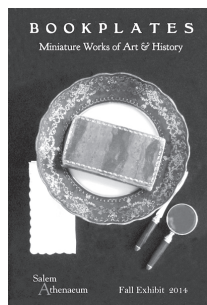
Exhibitions

The following exhibitions were displayed in the Wendt Room during the past year.



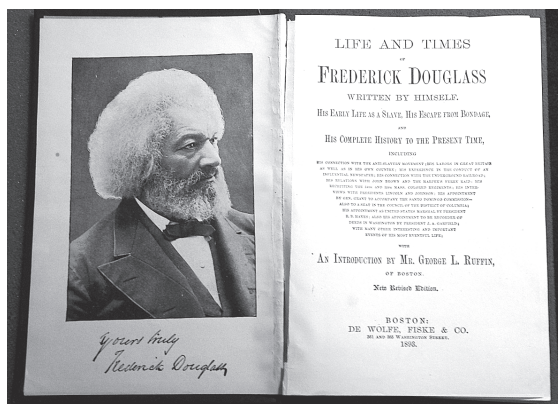
Spring 2014: *Transformation: Books Renewed*

A showcase of the first “graduates” of the Athenæum’s Adopt-a-Book Program. “Before” and “process” photos, conservator’s tools and illustrations of book anatomy offered an up-close look at the painstaking book conservation process.



Fall 2014: *Bookplates: Miniature Works of Art*

This impressive array of bookplates from the Athenæum’s collection and other sources included a supralibros and examples of bookplate art from the height of the form in the 18th and 19th centuries.



Adopt-a-Book

The Salem Athenæum held its first Conservation Evening in June 2012. Volumes from the Collection in need of conservation work were offered for consideration to the members. At each successive evening, we have unveiled the restored volumes, and presented a new group for conservation. The program has been very successful, and we have restored a small collection of volumes on an annual basis since. The following books were sponsored by Athenæum friends and members in June 2014.

Frederick Douglass
Life and Times of Frederick Douglass
Boston, 1832.

John Hawkesworth
An Account of the Voyages Undertaken...in the Southern Hemisphere, Volume I
(Cook's First Voyage)
London, 1773

Nathaniel Hawthorne
The Marble Faun, 2 volumes
Boston, 1860.

Thomas Jefferson
Notes on the State of Virginia
London, 1787.

Henry McIntyre
Map of the City of Salem
Salem, 1859.

Isaac Newton
Philosophiæ Naturalis Principia Mathematica,
4 volumes
Geneva, 1739.

Isaac Newton
Philosophiæ Naturalis Principia Mathematica
Amsterdam, 1714.

Edgar A. Poe
The Literati
New York, 1850.

The Present State of Peru
London, 1805.

Thomas Say
American Entomology, 3 volumes
Philadelphia, 1824.

Caroline Upham
Salem Witchcraft in Outline
Salem, 1891.

John Winthrop
A Journal of...the Settlement of Massachusetts
Hartford, 1790

Programs and Events

Events big and small attracted nearly 2,100 attendees to the Athenæum this year. A hundred more members and friends participated regularly in ongoing group meetings for book discussions, writing, poetry, and foreign language.

Annual Athenæum Events

Winter Gathering at the Adriatic, January

Annual Fundraiser, late winter/early spring—New Orleans North, February 21

Egg Hunt, Saturday before Easter

Buildings & Grounds Work Days, Spring and Fall

Garden Party, first Sunday in June

New Members nights, twice annually—June and October

Book Sale and Member Preview, September

Winter Welcome, December

Conservation Evening

Concerts and Performances

Presented by Cambridge Society for Early Music

The Birth of the Baroque: Guido's Ear

Diverse Pleasures—From the Sublime to the Ridiculous: Les Bostonades

A More Subtle Art—The 14th Century Avant-Garde: Blue Heron & Les Délices

The Tragedy of Sümbül the Black Eunuch—A coffee house opera: Dünya: an Early Music Collective

Grass: A Conversation with Verse and Music, August 29-31

Spinning Yarns for the Holidays, December 12

Theatre of Words & Music, January 17 and March 21

Classes and Workshops

Kevin Carey, *Writing Fiction Workshop*

Peter Sampieri, *Playwriting Workshop*

Theo Theoharis, *Short Stories by Southern Writers*

Lectures, Readings, Panel Discussions

Donna Seger, *Spotlight: Salem Fire of 1914*,

Jay Winter, *Adams Lecture: The First World War in Transnational Perspective*

Laura Johnson, *Mementos: Jewelry of Life and Love from Historic New England*.

Co-presented by Salem Athenæum, Historic New England and Historic Salem, Inc.

J.D. Scrimgeour, *What Makes a Poem Great: Poets Share Their Favorite Poems*

Judy Anderson, *18th-century Furniture, Craftsmanship & Patronage in Marblehead*

Summer Salon Series July-August 2014

Trip Mason, *Never Trust a Printed Image: Contemporary Photography—Image Making Not Documentation...*

Hale Bradt, *Jungle Warfare in the Solomon Islands: Another View*

Hannah Diozzi, *Tales of the Trails: Adventures of a Walking Tour Guide*

Peter Alachi, *Germs: The Good, the Bad and the Ugly*

Charlie Allen, *Growing up in the Chestnut Street Area: The people who influenced my development as an artist.*

Lynn Murray, *My Travels in Africa*

A Conversion with Hannah Tinti and Bruce Machart

Special Events

The Rebel Pirate Book Launch with member Donna Thorland, April 6

Night Owls, May 2 and June 7

Conversion Book Launch with member Katherine Howe, July 2

Pickwickian Endeavors: 1st Bi-annual Dickens North American Conference,
September 26, 27, 28

Salem Literary Festival Kick-Off Party, November 7

7th Annual Grand Wine Tasting at the Hawthorne Hotel, November 2014,
Benefit with Historic New England, Historic Salem, Inc., and Hamilton Hall

Groups and Programs Hosted at the Salem Athenæum

One of the ways the Athenæum contributes to the cultural enrichment of the community is to offer our meeting space to several regional organizations conducting cultural pursuits. The following groups host meetings or events in our building.

Athenæum Book Group

Dickens Fellowship North of Boston

GrubStreet Workshops

Incessant Pipe Poetry Salon

La Tertulia, Spanish language group

Panda Land, Mandarin Chinese for Children

Open Studio for Writers

Re-appraisal Reading Circle

Salem Writers' Group

Scrabble Club

Scribbler's Ink Prompt Writing Workshops



Annual Report of Activities

- *Salem Athenæum.net*, our website, received a fresh new design created by Trustee Ken Harris to highlight our programs and offer enhanced user experience on phones and tablets.
- Two Athenæum member-authors published new novels and held their book launch celebrations at the Athenæum. Donna Thorland, released *Rebel Pirate*, the second novel in her *Renegades of the Revolution* series, on April 6. New York Times bestselling author Katherine Bygrave Howe released her latest novel, *Conversion*, on July 2.
- During the Annual Garden Party, the Edward Augustus Holyoke Award was presented by the Trustees to Sue Weaver Schopf, Ph.D. for her leadership of the Athenæum's education programs. Sue is the third recipient of this award, established in 2006. Previous winners are Win Wilkens and Elaine von Bruns.
- Rebecca Beaulieu received the 2014 Salem Athenæum Literary Award, which is given to the graduating Salem High student who is most distinguished by his or her abiding curiosity, intellectual engagement, and passion for literature.
- The Governance Committee was formed in May 2014 as a result of trustee retreats facilitated pro bono by Jack Good, Vice President of Peoples United Bank. The Governance Committee formalizes written policies, job descriptions and acts as an advisory committee to the board on matters related to board practices. The committee also includes the Executive Committee, which meets monthly with the Director, and the Nominating Committee, which now has a year-round recruiting process.
- Governance work was swiftly undertaken as a result of the Athenæum's being awarded two Essex County Community Foundation grants from the Fund for Nonprofit Excellence: \$5,000 in 2014 and \$2,300 in 2015. The awards provide the board the opportunity to work with professional consultant Gayle Gifford on reviewing roles, governance structure and the by-laws. She also assisted in the creation of written policies and work plans.
- Thanks to generous member response to special "Fund-A-Need" requests, we were able to make several extra-budgetary purchases: a new garden bench, a new frame for our Audubon print, an air conditioner, repairs to antique chairs and the unexpected replacement of our LCD projector, which is required for presentations.
- Our Garden served as stage for the debut of a new play in August, *Grass: A Conversation in Verse and Music* written and directed by Peter Sampieri. This hour-long adaptation of Whitman's *Leaves of Grass* presented the timeless American classic in a fun, outdoor setting. We also enjoyed our traditional summer events including the Summer Salons, with a record attendance of 355 guests, and the annual Garden Party in June.

- In September, the Athenæum hosted local and international performers, historians, scholars, and artists at the premiere Pickwickian Endeavors, the bi-annual North American Dickens conference weekend, coordinated by Dickens Fellowship North of Boston Branch. Morning sessions held daily at the Athenæum were followed by afternoon and evening sessions at various venues in the Salem and Boston area.
- The Salem Literary Festival held its kick-off gala in the Athenæum Reading Room on November 7. Authors and readers from across the country gathered to celebrate the written word and mark the collaboration of Salem Lit Fest with the award-winning writers' forum and website, Writer Unboxed.
- In November, Theatre of Words and Music began its tenure at the Athenæum. TWM events, held bimonthly, feature a literary reading, concert, pop-up gallery and an open mic session.
- While organizing the older fiction collection in the Lower Level Stacks, Marla Gearhart and Elaine von Bruns discovered many long-forgotten and prolific authors, which led the Collections Committee to establish the Re-Appraisal Reading Circle. The Circle meets periodically to discuss once well-known writers from the Athenæum's collection.
- Curator Elaine von Bruns gave a special tour of the Bookplates exhibit to the children of the Phoenix School, a private K-8 school in Salem. Tours were also given to local, national and international (from Belgium, New Zealand, Austria, to name a few) visitors throughout the year.
- To maintain cleanliness and a steady climate for the preservation of historical collections, the deteriorated plaster ceiling in the Rare Book Room was repaired following asbestos abatement on adjacent pipes.
- Following the installation of a large air conditioner in the first floor Reading Room and a smaller unit on the second floor, a gas burner and gas train were replaced on our aged boiler in September to keep our constituents comfortable in both reading rooms year round.
- The harsh winter demanded some extraordinary measures including hand-shoveling snow off the rear portico roof. Fortunately, only minimal damage occurred to the building, primarily leaking windows, which received stop-gap emergency repairs.
- The Athenæum was transformed on February 21 into New Orleans North — our most successful fundraiser to date. This Mardi Gras-themed party featuring blues guitarist Mark T. Small brightened an otherwise long, cold winter. Many thanks to The Krewe, our guests and the artists who donated their works and services to the silent auction.

Financial Position

For the fiscal-year ended March 31, 2015, the Athenæum reported modest Operating Income of \$3,652.42 — exceeding our FY15 budget by just under twenty-five percent. In keeping with board practice, the income is designated as Board-restricted.

During the year, the Board authorized \$16,300 in non-operating expenditures beyond budgeted funds to assess and preserve the Collection, create a new website, and deal with building and other collection-related needs. These sums were taken from Board-restricted funds designated by donors and by the trustees for such purposes.

The Athenæum's restricted funds at year end were as follows:

Proprietor shares	\$ 11,477.40
Collections	1,909.38
Adopt-a-Book	647.07
Fund-a-Need	277.71
Prior years' Retained Earnings	9,772.46
<hr/>	
TOTAL	\$ 20,184.02
LESS: Add'l. commitments pending	4,168.20
Board Restricted Funds @ 3/31/15	\$ 16,015.82

At the end of the fiscal year, the endowment stood at \$ 1,342,352.26, with an additional \$53,257 in uncommitted Killam Funds (which are designated for major building projects). During the fiscal year, the Athenæum's endowment assets increased in value by approximately 4.50% — after fees and scheduled monthly withdrawal to support the organization's operations. Absent those withdrawals, total growth would have measured approximately 7.70%. The endowment is managed by Boston Private Bank & Trust.

The Athenæum's Investment Policy allows for withdrawals to support operations in an annual amount not to exceed four percent of endowment principal. In recent years, those withdrawals have measured much closer to three percent. The FY'16 budget calls for an almost \$13,000 increase in Scheduled Income from the endowment of \$53,700, bringing the annual income to be withdrawn from the endowment to four percent of the March 31, 2015 endowment market value. The Trustees voted this increase to allow for use of the additional funds for special projects during the new fiscal year.

On balance, the Salem Athenæum remains on stable financial footing with significant value in the organization's collections and real estate, and despite continued reliance on endowment income and fundraising to support on-going annual operations.

The Athenæum's new accounting firm, Vesey & Weeks, will prepare the Athenæum's review.

Operating Statement & Budget

		Actual FYE 3/31/15	Budget FYE 3/31/16
Income			
	Annual Appeal	\$ 12,3631.17	\$ 13,000.00
	Building Rental	2,273.00	5,500.00
	Collections	1913.03	2,000.00
	Development/Events	13,474.59	19,500.00
	Donations	6,101.75	6,250.00
	Dues	36,996.35	39,740.00
	Income from Sale of Shares	989.30	1,500.00
	Miscellaneous	129.69	100.00
	Programs/Education	7,964.58	13,500.00
	Scheduled Income	40,704.00	53,700.00
Total Income		\$ 123,177.46	\$ 154,790.00
Expense			
	Administration	16,636.54	18,550.00
	Buildings and Grounds	17,656.90	18,615.00
	Collections	7,373.28	7,700.00
	Development	3,124.61	2,960.00
	Insurance	11,273.00	11,750.00
	Membership	1,043.72	1,440.00
	Net Payroll	39,910.30	49,160.00
	Payroll Taxes	9,717.87	12,080.87
	Programs/Education	3,902.16	7,925.00
	Salem Literary Award	69.60	100.00
	Utilities	8,817.05	10,400.00
Total Expense		119,525.03	140,680.87
	Board Reserve		13,000.00
Net Operating Income		\$ 3,652.43	\$ 1,109.13

Restricted Funds Statement & Budget

Income			
	Collections—Restricted	\$ 5,500.00	\$ -
	ECCF Grants	5,000.00	2,300.00
	Fund-a-Need	2,512.60	-
	Adopt-a-Book	11,119.42	10,000.00
Total Income		24,132.02	12,300.00
Expense			
	Collections—Restricted	2,200.00	
	ECCF Grants	5,000.00	2,300.00
	Fund-a-Need	1,634.79	
	Adopt-a-Book	10,472.35	9,500.00
	Restricted Funds Use	14,100.00	
		\$ 33,407.14	\$ 9,500.00
Net Restricted Funds (Use) Excess		\$ (9,275.12)	\$ 500.00

Note: Use of Restricted Funds often spans multiple fiscal years.

Donors

April 1, 2014 - March 31, 2015

The Athenæum is grateful for the generous support of all our donors!

Hawthorne Circle Giving

\$3000+

Robert E. Levin, *in memory of Karen N. Levin*

\$2000-2999

Dorothy and Hale Bradt

\$1000-1999

Scott Guthery

Mr. and Mrs. Brenton H. Dickson

Mary Katz

Darrow Lebovici and Meg Twohey

Matthew Whitlock and Penelope Neal

\$500-999

Mr. and Mrs. Stephen H. Clark

Thaddeus Gillespie and Elizabeth Padjen

David Hart and Barbara Cleary

Edith Luray and Richard L. Lehman

Miss Jane A. Phillips, *in memory of*

Stephen Phillips

Sue Weaver Schopf

Mary Simpson and Wayne Sousa

Mr. and Mrs. David Williams

\$100-499

Donna Albino

Mr. and Mrs. Blake Anderson

James and Claire Bailey

Jeffrey P. Beale

John and Judy Wang Bedell

Wendy Biggs

Nathalie Binney

Ellen Brandenburg, *in memory of*

George Brandenburg

Abby Burns

Walter and Ann Fisher Cook

Peter Copelas and Krissta King

Mary Costello

Jannette and Rafael Crespo

Debra Glabeau and Ken Harris

Debrah R. Glasser

Bruce Goddard and John Casey

Sandra Heaphy

Marie Heinz, *in memory of George D. Heinz*

David and Jeannine Helen

Megan Hurst and Tony Owens

Steve and Darcy Immerman

Timothy and Joanie Ingraham

Meghan Jendrysik

Mr. and Mrs. Richard Jendrysik

Dana P. Jordan, *in memory of Joan C. Jordan*

Judy and Jim Kearney

Francie King and Robert Erbetta

Nancy Lutts

Timothy and Julie Shaw Lutts

Mr. and Mrs. Edward Margerum

Mr. and Mrs. Frederick D. Mason, III

Mr. and Mrs. Peter Merry

Mr. and Mrs. Robert Mitnik

Lynn Murray

Anne B. Nigro

John Owen and Jean Marie Prociou

Patrick F. and Joan Padden, Jr.

Daniel C. Randall and Phillip Gillespie

Octavia Randolph and Jonathan Gilman

Carol Rice and Gerard Bras

Mr. and Mrs. Eric Rosenvold

Mr. and Mrs. Michael Schaefer

Anne L. Seamans

Donna and John Seger

Robert N. Shapiro

Victoria and Louis Sirianni

Mr. A. Homer Skinner

Stanley and Jody Smith

Mr. and Mrs. Willis Stinson, III

Charles E. and Donna Thorland

Barbara Timmons
Chip and Leslie Tuttle
Liz Vago
Dr. and Mrs. Thomas Vander Salm
Chuck and Elaine von Bruns
Dr. Kirsten Wagner
Gary Ward and Brunonia Barry
Angela Williams and Charles Swift
Cynthia J. Williams
Frederic Winthrop, *in memory of*
Bill Saltonstall

Up to \$99

Anonymous
Susanna Baird, *in honor of the Salem*
Writers Group
Richard Boardman
Marie Brescia
Stephanie Buck and Matthew Phillion
Karen M. Burns
Kevin and Elizabeth L. Carey
Roberta Clement
Peter A. Copelas
Karina Corrigan
Brian and Kathy Cuffe
Christian Dupont
Mary-Ann Fraser
Lawrence Frej
Karen Gahagan
Marla and George Gearhart
William Goldberg and Marlene Jueder
Deborah A. Greel and John Wathne
Sarah and Neil Harrington
Annie Harris and Andy Lippman
Mr. and Mrs. Edward Jendrysik
Mr. and Mrs. Timothy Jenkins
Laurie LaChapelle and David Leach
Peter Little
Roger Mason and Ellen Colingsworth
Mr. and Mrs. Francie T. Mayo
Robert T. Moulton, Jr.
Sam Northrup
Carole O'Blenes
Beth Paschal

Denise Regan and Chris Burke
William Sano
Jenn and Gary Santo
John Schneider
Joycelyn Snell
J. Michael Sullivan and Clare White-Sullivan
Carlotta R. Tyler
Katherine A. van Dyke
Patricia Zaido

Adopt a Book

Donna Albino
Anonymous
Wendy Biggs
Hale and Dorothy Bradt
Stephen H. Clark
Mary Costello
Mr. and Mrs. Brenton H. Dickson
Sarah Harrington
Sandra Heaply
David Helen
Megan Hurst and Tony Owens
Meghan Jendrysik
Mary Katz
James and Judy Kearney
Darrow Lebovici and Meg Twohey
Robert E. Levin
Nancy Lutts
Jean Marie Prociuous
Mr. and Mrs. Joseph Pyfrin
Daniel C. Randall and Phillip Gillespie
Donna and John Seger
Mary S. Simpson
Wayne C. Sousa
Mr. and Mrs. Willis Stinson
Barbara Timmons
Elaine and Chuck von Bruns
Angela Williams and Charles Swift

New Shareholders

Peter G. and Jan N. Eschauzier
Thomas Forest Farb
Paul K. Soucy

Corporate Sponsors

Story Sponsors, \$1000

Salem Five

Matching Gifts

Elsevier Foundation

Loring, Wolcott & Coolidge Trust

United Technologies

Grants

Essex County Community Fund

Fund for Nonprofit Excellence Grant Award

In Kind

Painting by Jasper Francis Cropsey and

Painting by Childe Hassam

Thomas Forest Farb

Facilitating board retreat and planning session

Jack Good, Vice President of Peoples Bank

Website design

Ken Harris

Reading Room air conditioner

David Hart

Raven for children's corner

Pamela Jendrysik

Kousa dogwood tree

Ted and Lisa Jendrysik

Refreshment supplies

Judy Kearney

Rubinstein Collection, 94 CD boxed set

Carolyn and Joseph McGuire

Air conditioner installation

Bob Oullette

Repair of antique chair

Michael Selbst

Repair of antique chair

Arthur Sullivan

Refreshments

Angela Williams

Subscriptions

Christian Science Monitor

Christian Science Reading Room Lynn

GRANTA

Marie Heinz

Books Given by the Author

Night Walking with Nathaniel

Dennis Daly

Mules of Monte Cassino

Jim DeFilippi

Mission in Time

Richard Scott

Rebel Pirate and The Turncoat

Donna Thorland

Donations to the New Orleans North

Silent Auction

Charlie Allen

Brunonia Barry

Susan Caplan

Jim DeFilippi

Heather Hughes

Katherine Bygrave Howe

Ken Harris

Tripp Mason

Peter Sampieri

Richard Scott

Racket Shreve

Jason Walsh

Book Collections Donated for the Annual Book Sale

Eric Bauer and Genevieve Gilson

Tom Davis

Perez DeWolfe

Lynn Frothingham and David O. Decker

Betsy Hyam

Steve and Darcy Immerman

Robert Levin

Richard Luecke and Perry McIntosh

Nancy Lutts

David May

Michael Rutstein

Programming Partners

GrubStreet

Historic New England

Historic Salem

Accuracy is important to us! If you find any errors or omissions, please contact us.

Committees

Meg Twohey and Jean Marie Procius are ex officio members of all committees

Building & Grounds

David Hart & Dick Jendrysik – Co-chairs, building

Pam Jendrysik – Chair, grounds

Darrow Lebovici, Arthur Sullivan, Charles Swift

Collections

Marla Gearhart – Chair

Donna Albino, Wendy Biggs, Stephen Clark, Joe Bassett,

Charles Swift, Win Wilkins, Elaine von Bruns

Adopt-a-Book: Sarah Harrington & Donna Seger – Co-Chairs

Communications

Ken Harris – Chair

Steve Immerman, Carolyn McGuire – newsletter & social media

Development

Meg Twohey & Steve Immerman – Co-Chairs

Stephanie Buck, Francie King, Charles Swift

Education Programs: Lectures, Courses & Music

Ken Harris – Chair 2015-16

Abby Burns, Sarah Harrington, Betsy Lahikainen, Sue Schopf, consulting

Finance

Angela Williams – Chair

Pat Padden – Treasurer

Sandy Dickson, Steve Immerman, Tim Jenkins, Michael Schaeffer, Chuck von Bruns

Governance

Governance & Nominating: Meg Twohey & Steve Immerman – Co-Chairs

Ken Harris, Dick Jendrysik, Angela Williams

Executive: Meg Twohey, Ken Harris, Pat Padden, Stephanie Buck,
with Director Jean Marie Procius

Membership

Judy Kearney – Chair

David Ashton, Ellen Brandenburg, Abby Burns, Edith Luray, Perry McIntosh,

Nancy TenBroeck, Sharon Williams

Writers

Bru Barry & J.D. Scrimgeour – Co-chairs

Shari Caplan, Kevin Carey, Jim DeFilippi, Shari Frost, Ken Harris,

Katherine Bygrave Howe, Lisa Jendrysik, Colleen Michaels, Peter Sampieri

Volunteers

The tireless efforts of all the Committee members, Trustees, and staff mentioned throughout this report are vitally supported by talented and generous volunteers. Your dedication sustains the Salem Athenæum. Thank you.

Wasim Altaf
Erik Bauer
Judy Bedell
Gerard Bras
Marie Brescia
John Casey
Roberta Clement
Ellen Collingsworth
Naomi Cottrell
Caroline Cox
Jann Crespo
Maureen Dalton
Carrie Dichter
Betsy Dickson
Jennifer Firth
Richard Fubel
Jonquil Furse
Connie Gephart
Genevieve Gilson
Debra Glasser

Bill Goldberg
Cynthia Griffin
Mary Jane Harrison
Ron Harrison
Clare Hayes
David Helen
Pam Jendrysik
Ted Jendrysik
Megan Jendrysik
Linda Jenkins
Jim Kearney
Jan Kendall
Stacia Kraft
Maryann L'Heureux
Laura Luckey
Tim Lutts
Joe McGuire
Marie Meegan
K.K. Nielsen
Anne Nigro

John Owen
Karen Pelletier
Paul Pinto
Lynda Pyfrin
Paul Redmond
Betsy Ricciarelli
Julie Rose
Michael Selbst
Martha Shreve
Bonnie Hurd Smith
Jody Smith
Stanley Smith
Gus Sousa
Ann Sullivan
Kathleen Taussig
Barbara Taylor
Chris Thomson
Barbara Timmons
Jane Wall
Amy Whelan



Library Volunteers

Special recognition is in order for those who volunteer on a weekly basis.
Thank you for your dedication!

Donna Albino
Wendy Biggs
Mary Costello
Phil Dwight
Marla Gearhart
Peter Little
Rich O'Keeffe
Elaine von Bruns

Salem Athenæum

337 Essex Street
Salem, Massachusetts 01970

For general information about the Athenæum
or its events, please contact the Director:

Jean Marie Prociou
978-744-2540
info@salemathenaeum.net