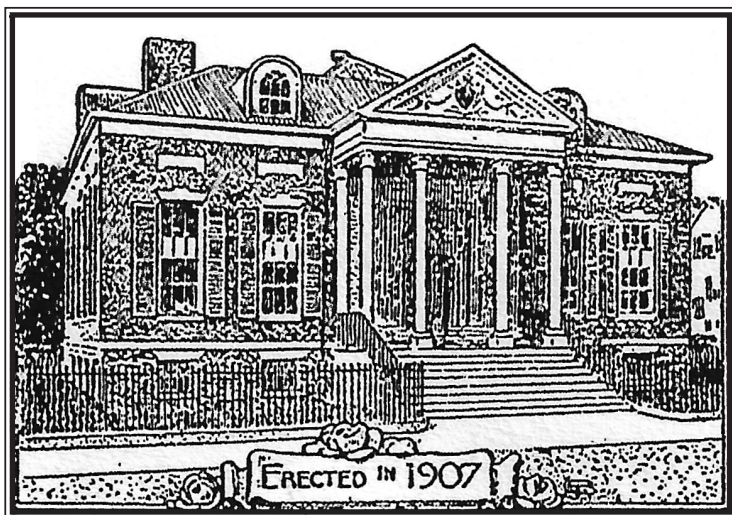


Salem Athenæum

Founded 1810

Inspired works, lively discourse, and serious fun for the entire North Shore



Annual Report

April 1, 2015–March 31, 2016

Board of Trustees and Staff

President

Meg Twohey

Vice-President

Ken Harris

Treasurer

Patrick F. Padden, Jr.

Clerk

Stephanie S. Buck

Trustees

Brunonia Barry

Wendy S. Biggs

Abby Burns

Marla Gearhart

Phillip Gillespie

David Hart

Steve Immerman

Richard Jendrysik

Owen R. Mathieu, Jr.

Angela Williams

David Williams

Jean Marie Procious, *Executive Director*

Carolyn McGuire, *Marketing Coordinator*

Elaine von Bruns, *Honorary Curator*

Shari Caplan, *Honorary Writing Program Director*



Our Mission Statement

To preserve and excite the literary and
cultural passions of the North Shore

Contents

President's Letter	4
Director's Letter	6
Members and Collections.....	7
Membership Survey	9
Programs and Events.....	10
Annual Report of Activities.....	12
Financial Position.....	14
Donors.....	16
Committees.....	20
Volunteers.....	21



For general information about the Athenæum
or its events, please contact:

Jean Marie Procius
978-744-2540
info@salemathenaeum.net
www.salemathenaeum.net

Letter from the President

Not only is the Salem Athenæum a library, it is an experience. The experience that you know and love is a springboard for us to work together to steward our resources and grow toward our full potential as a cultural center for the North Shore. Within these pages you see the highlights of all that has transpired at the Athenæum in the past year and toward this end, I am pleased to report to you that we have continued to make progress on our three-year strategic plan.

Expand programming and broaden audience participation that cements the Athenæum's role as a cultural and learning center for the North Shore. The Writers programs continue to flourish and bring new and more diverse audiences, in concert with our broad spectrum of lectures, courses, concerts, salons, special interest groups, and member events. We are particularly excited by the work we are doing with the theater program at the Salem Y.

Revise the Athenæum by-laws and governance processes to better align the Board and its work with the current needs of the Athenæum. With our second consecutive grant from the Essex County Community Foundation, we revised bylaws to reflect current board practices and enhanced government reporting to be fully compliant with the latest regulations and grantor expectations.

Maintain and extend access to the Athenæum's important historical collections and building and grounds, while planning for our member and program needs for the future. Because of the generous donors to the Adopt-a-Book program, we continue to make progress on preserving our most valuable books. To further protect the collections, we are seeking grants to restore the Athenæum's windows, with David Hart creating the maintenance plan. Dan Ricciarelli is also contributing professional architectural services to create a building-use plan, which informs planning for the future of how we use the building and grounds.

Results of the recent survey are instrumental to the planning process. Thank you for your participation in the recent survey; we look forward to sharing the results with you. New trustee David Williams brought his political polling expertise to the design and analysis of the survey. His report follows on page 9.

Increase financial support from individuals, businesses and grant sources. We are grateful for continuing corporate and individual support and have now hired a part-time development consultant to help us grow our financial capacity.

Nothing the Athenæum does could be accomplished without your participation and the help of so many committed, talented volunteers. Our truly hard-working Board of Trustees is among our greatest assets. We thank departing trustee Abby Burns for her service. The continued vibrant life of the Athenæum relies on the support of our sponsors and so many of you who have given generously throughout the year. Thank you.

As ever, Jean Marie Procius and Carolyn McGuire are true lynch pins. Jean Marie plays a crucial role and her responsibilities have grown as the institution's programs and offerings have grown. The Trustees are pleased to recognize Jean Marie's role by naming her Executive Director of the Athenæum.

As we mark the 206th year of the Salem Athenæum, we hope you will join us in celebrating the Athenæum, all that it means to you personally, and all we have been able to accomplish together.

Meg Twohey
President, Board of Trustees



Letter from the Executive Director

Last May marked the beginning of the tenth year of my tenure at the Salem Athenæum. In the past decade, we have welcomed hundreds of participants and members to our community, but I have known many of you since that very first Garden Party in June 2005. It was that day, two weeks into my time at this two hundred year-old institution, that I learned firsthand how it all happens. The grounds were transformed into a lively wonderland of Dixieland jazz and jaunty hats, a striking change from the Athenæum's daily routine. On this and every occasion, your time and gifts made it possible — from the initial idea, planning, organizing, set-up and tear-down to the oft-forgotten but equally critical role of attending. Opportunities to participate abound at the Athenæum and we will continue to offer new and varied programs and services as long as you — our community — keep showing up.

It is only through our capable, willing, and generous volunteers, supporters, and participants that the Athenæum is able to continue to grow and prosper while maintaining its place of prominence in the intellectual life of the community.

What will the Athenæum be in the coming decades? No matter the answer to that question, with you as our champions, it can only be even better!

Jean Marie Prociuous
Executive Director



Members and Collections

The new membership structure which was instituted last year has yielded results with 31 of the 52 new memberships taken out this year being for individuals. Annual rates remained the same with Individual Subscriber at \$85.00 and Household Subscribers at \$105.00. The Proprietors Assessment remained at \$210.

Memberships

Individual Subscribers:	118
Household Subscriber Memberships:	129
Shares held by Proprietors:	100
Shares returned and re-issued:	4
Shares transferred:	2

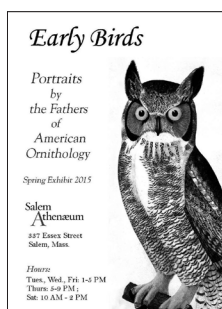
Library Materials

New books cataloged:	345
Existing books cataloged:	2280
(electronic catalog project)	
Periodical Subscriptions	26

Circulation

Fiction	949
Non-Fiction	335
Periodicals	204
Children's	113
(In-library use not included.)	

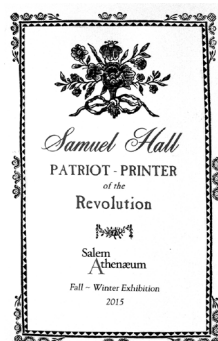
Exhibitions

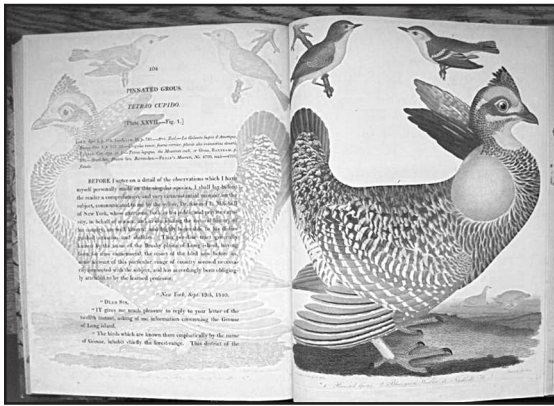


Spring/Summer 2015: *Early Birds: Portraits by the Fathers of American Ornithology*

Curated by Elaine von Bruns, the exhibit celebrated Alexander Wilson and John James Audubon. Both Wilson's *American Ornithology* (1808-1814) and Audubon's *Birds of America* (1827-1838) gave Americans and Europeans pictures and knowledge about the wonders of what they both termed "the feathered tribe" of America.

Fall/Winter 2015: *Samuel Hall, Patriot Printer of the Revolution*
Curated by Dr. Matteo Pangallo, Fellow of Harvard University, this in-depth exploration of the life and work of Salem's first printer included many of Hall's publications, such as books, pamphlets, almanacs, newspapers, and more, from a private collection and the collection of the Salem Athenæum.





Adopt-a-Book

The Salem Athenæum held its first Conservation Evening in June 2012. Volumes from the Collection in need of conservation work were offered for consideration to the members. At each successive evening, we have unveiled the restored volumes, and presented a new group for conservation. The program has been very successful, and we have since restored a small collection of volumes on an annual basis. The following books were sponsored by Athenæum friends and members in September 2015.

L.C. Baker

History of the US Secret Service
Philadelphia, 1867.

Maria Edgeworth

Little Plays
Philadelphia: Thomas T. Ash, 1827.

Nathaniel Hawthorne

Mosses from an Old Manse
New York, 1846.

Edward Augustus Holyoke

Dr. Holyoke's estimate of the excess of heat and cold. Salem, 1790.
Temperature observations in Salem. 1793-1818.
Bound together: Boston, March 1820.

Edwin James

A Narrative of the Captivity and Adventures of John Tanner.
New York, 1830.

Juvenile History of Birds. Part I.
Philadelphia, 1818.

Fiske Kimball

Mr. Samuel McIntire, Carver, the Architect of Salem.
Portland, Maine, 1940.

Edward S. Morse

Japanese Homes and Their Surroundings
Boston, 1886.

John Pickering

Eulogy on Nathaniel Bowditch
Cambridge, 1838.

John Lovell

Funeral Oration...Peter Faneuil.
Cambridge, 1743

Genio Scott

Fishing in American Waters
New York, 1873.

Alexander Wilson

American Ornithology; or, the Natural History of the Birds of the United States
Philadelphia, 1808 - 1814. 9 Vols.

Membership Survey

One of the goals set for this fiscal year was the completion of a Membership survey to gauge the performance and satisfaction of the Athenæum's offerings. The membership was also asked questions regarding potential priorities for the institution in coming years — both for programming and the physical building. The survey ran from late December to the end of March using an internet-based data collection program. Email invitations were sent to 1,061 potential respondents including proprietors, subscribers and former subscribers, non-member program and event participants, and donors. We received 300 completed surveys for a 43% response rate.

Demographically the sample is comprised of the following:

- 20% are proprietors; 50% are individual or household members; 13% are past members; 17% have never been members.
- Nearly 60% of Proprietor households are represented in the sample.
- The highest membership tenure categories are 11 years or more (26%) and 3-5 years (23%).
- 70% have lived on the North Shore in excess of 10 years.
- 72% are residents of Salem, 10% are residents of Marblehead, and 6% are residents of other neighboring towns.

While a complete analysis and presentation of the survey results is planned for later in the year some of the major findings in the survey are:

- When considering the cost of membership, 90% of respondents say that it is worth what they paid; 57% say it's worth about what they paid and 33% say it's worth more than they paid.
- Significant majorities of respondents are satisfied with the condition of the building overall and on a number of specific aspects of the Athenæum (seating, ambient temperature, lighting cleanliness, etc.)
- Lectures, Exhibitions, and the Historical Collection are the most highly rated Athenæum offerings on an importance scale.
- Those who have attended programs with fees beyond membership (concerts, live performances, lectures, courses, etc.) report satisfaction with the value they received considering what they paid.
- Finally, membership retention is extremely strong. 96% of the respondents claim that they will renew their membership when the current year has ended.

Programs and Events

Events large and small attracted just under 2,000 attendees to the Athenæum this year. A hundred more members and friends participated regularly in ongoing group meetings for book discussions, writing, poetry, and foreign language.

Annual Athenæum Events

Winter Gathering at the Adriatic, January

Annual Fundraiser, late winter/early spring —Club Havana, February 27

Egg Hunt, Saturday before Easter

Buildings & Grounds Work Days, Spring and Fall

Garden Party, first Sunday in June

New Members nights, twice annually—June and October

Book Sale and Member Preview, September

Conservation Evening, September

Welcome Winter, December

Concerts and Performances

Concerts Presented by Cambridge Society for Early Music:

The Crown of the Kingdom of Poland: Il Giardino D'amore & Cambridge Concentus

Five's a Crowd: The Diderot String Quartet with guest artist Sarah Darling

Think Spring! Fun for Families, Philip Alexander and the Family Singers, April 4

Finding My Place: One Man's Journey to Adulthood, Judah Leblang, April 11

Beethoven's Early Works with Boston Classical Trio: Susanna Ogata, Guy Fishman, and Ian Watson, April 17

Staged Readings from the *Playwriting Workshop*, June 1

A Winter's Tale, Rebel Shakespeare, August 27

Pencils, Teachers, Dirty Looks, storytelling event, September 4

Pirate Revels, October 30

Unbreak My Heart: Stories of True Love and True Disasters, storytelling event
February 18

Classes and Workshops

Sue Weaver Schopf, *The Art and Fiction of World War I*

Peter Sampieri, *Playwriting Workshop*

Katherine Howe, Masterclass: *When Witches Fly, Which Way Should They Hold the Broom?: Experiments with Genre Convention in YA and Adult Fiction*

Victoria Nadel, *Yoga in the Garden*, Saturday mornings in August

Young Writers Morning, a morning of writing activities for kids ages 8-14 with several professional writers

Shari Caplan, *Movietelling: A Workshop*

Theo Theoharis, *Three Award-Winning Novels*

Lectures, Readings, Panel Discussions

Don Wilding, *Henry Beston's Cape Cod*

Sue Schopf, *Poets of World War I*

Carmela Cattuti, *Between the Cracks*

Hosted by Salem Sons of Italy Veturia Romana Lodge

Dianne Hales, *Mona Lisa: A Life Discovered* May 21, 7:00 p.m.

Octavia Randolph, *Unlucky in Love: John Ruskin* June 25

Dickens and Massachusetts: The Lasting Legacy of the Commonwealth Visits

Presented by Dickens Fellowship North of Boston

Jim McAllister, *Kate Butler Hathaway*

Edward Nilsson, *No Place Like Home—Ada Louise Huxtable's ranch house as her housing ideal* Co-presented by Salem Athenæum and Historic Salem, Inc.

Matteo Pangallo, *Samuel Hall: Printer-Patriot*

Richard Parker, *Democracy in America series: Still the Chosen People, Still the Promised Land?: How Religion Keeps Shaping American Politics*

Summer Salon Series July-August 2015

Joseph McGuire, *Birding Stories, Tips and Tools*

Price Grisham, *Visiting and Speaking at Chawton House Library*

Lynn Murray, *Travels in Patagonia*

Norman Gaudrault, *Two Years in America: The Discoveries of a French Family*

Carlotta Tyler, *A Deeper Knowing: A Story Sharing Process*

Paul Kelly, *Macro or Micro?*

Susan Snively, *Emily Dickinson: The Heart Has Many Doors*

Toddy Glaser, *A Paper Conservator's 40-Year Journey through a Changing Landscape*

Special Events

The Puddle Wonderful Poetry Contest, Spring 2015

Abraham Lincoln Convocation on the 150th Anniversary of his death, April 15

North Shore International Poetry Salon

Dangerous Words—Unexpected Destinations, April 12

Kissing Moonlight: Hafez and the Path of Ecstasy, July 11

Salem Poetry Seminar, June 3-6

Night Owls, July 3 and November 6

Wilber's War Book Launch with member Hale Bradt, July 29

Last Drops of Summer: An Informal Tasting in the Garden, September 13

8th Annual Grand Tasting at Hawthorne Hotel, November 13

Benefit with Historic New England, Historic Salem, Inc., and Hamilton Hall

The Salem Literary Festival, November 12-14

Flash Book Sale!, March 11

Annual Report of Activities

- The harsh winter left over 2 feet of snow in the garden well into April 2015. Since it was impossible to host the traditional Egg Hunt, we gathered for Think Spring!—a special concert with the energetic and interactive musical talents of Philip Alexander and the Family Singers.
- Lisa Robinson received the 2015 Salem Athenæum Literary Award, which is given to the graduating Salem High student who is most distinguished by his or her abiding curiosity, intellectual engagement, and passion for literature.
- The Boston Classical Trio—Susanna Ogata, violin, and Guy Fishman, cello, and keyboard virtuoso Ian Watson, presented a special concert of Beethoven's early works on period instruments on April 17.
- Thanks to generous member response to special “Fund-A-Need” requests, we were able to make several extra-budgetary purchases, most notably repairs to six of our antique chairs that surround the tables in the Reading Room.
- The Reading Room was converted into a theatrical stage for the debut of scenes from original new plays created in the Playwriting Workshop taught and directed by Peter Sampieri in Spring 2015. A standing-room-only audience attended the premiere.
- To expand our offerings for aspiring young writers, the Athenæum hosted two special activities: The Puddle Wonderful Poetry Contest in the Spring, and Young Writers Morning, a one-day writing workshop where kids ages 8-14 could interact with professional writers.
- As part of the sixth Salem Poetry Seminar presented by SSU, the Athenæum served as workspace and reading venue for a week-long event in June for 13 college students selected from throughout the Commonwealth. Several free public readings by established poets teaching in the seminar and brief readings by the promising student poets were held during the week. Jill McDonough was the featured poet this year.
- The Athenæum building served as a key workshop location during the 2015 Salem Literary Festival. Sessions were held throughout the Athenæum building during festival hours on November 14. Authors and readers from across the country gathered to honor the written word.
- To maintain and improve safety of the collection, security cameras were installed in public areas throughout the building. Individual alarms also were installed on the paintings displayed on the first floor.
- In the effort to expand our presence as an outlet for the North Shore's literary community, we hosted two storytelling events: Pencils, Teachers, Dirty Looks in September, and Unbreak My Heart: Stories of True Love and True Disasters in

February. Local writers and storytellers were invited to tell true and original stories that they crafted themselves before an audience.

- Over the past year, we made necessary updates to our electrical system on the second floor including converting the one remaining gas light fixture in the Holyoke Room to electric, replacing original knob and tube wiring and adding outlets. The wiring for the new security cameras was also added at that time.
- The Last Drops of Summer, a new fundraiser held last September, featured local businesses offering food and drink tastings in the Reading Room. Those attending were able to sample wares including cheeses from around the world and baked goods and spirits from the North Shore.
- The annual book sale has been a fun and successful event for over a decade and donations were especially plentiful this year. We received so many books that the Collections Committee arranged for an additional one-day book sale which took place on Friday, March 11th. Several hundred books sold during the Flash Book Sale, giving our limited storage area additional space to accommodate donations for the September sale.
- A series of lectures around the theme Democracy in America will be held throughout 2016. Richard Parker of Harvard's Kennedy School kicked off the series with his lecture on the long-standing influence of religion in American politics.
- This year the annual fundraiser party was held at a new venue. We traveled down the street to Ames Hall to host Club Havana. A celebration of the re-opening of Cuba's borders with live music and dancing with the Greg Coles Drum and Dance Company allowed the Athenæum community to dance and enjoy Cuban food and music. Many thanks to our volunteers, guests and the artists who donated their work and services to the silent auction.



Financial Position

We are pleased to report positive operating results for the Salem Athenæum. The Athenæum is reporting meaningful increases in Operating and Net Income for the fiscal-year ended March 31, 2016. Net Ordinary Income of \$14,585 and bottom-line Net Income of \$20,193 were each well in excess of the prior fiscal year's results (\$3,652 and -\$5,623 respectively). Each measure was also well ahead of the FY16 budget numbers presented at last year's annual meeting (\$1,109 and \$609). The significant positive variances were largely due to a near twenty percent increase in Total Income and a delay in staffing the planned part-time Development position until May 2016. The increased Income fell approximately 6.5% short of our budgeted number, but the shortfall was more than offset by Operating Expenses which measured approximately 12% behind plan.

During the fiscal year, the Athenæum's endowment balances declined by approximately 3.50% to \$1.295 Million – after scheduled monthly withdrawal to support the organization's operations. Absent those withdrawals, the endowment would have been essentially flat, showing an increase of just 0.30%, performing a little better than the indices.

As noted in our report last year, the Athenæum's Investment Policy allows for withdrawals to support operations in an annual amount not to exceed 4% of endowment principal. In recent years, those withdrawals have measured much closer to 3%. Early in FY16, we increased the monthly draw to the full 4% annual amount.

The Board has recently approved a change in our Investment Manager, and will move the endowment accounts to Appleton Partners.

With continued prudent management of the Athenæum's operating expenses, and despite continued reliance on endowment income and outside fundraising to augment operating income, the Salem Athenæum remains on stable financial footing.



Operating Statement & Budget

		Actual FYE 3/31/16	Budget FYE 3/31/17
Income			
	Annual Appeal	\$ 13,605.35	\$ 14,500.00
	Building Rental	3,936.00	3,500.00
	Collections	2,199.25	2,200.00
	Development/Events	18,127.55	23,800.00
	Donations	6,294.28	7,250.00
	Dues	38,581.34	40,000.00
	Income from Sale of Shares	2,000.00	1,500.00
	Miscellaneous	1,165.54	300.00
	Programs/Education	12,588.32	15,300.00
	Scheduled Income	51,284.00	51,802.00
Total Income		\$ 149,781.63	\$ 160,152.00
Expense			
	Administration	17,622.79	19,000.00
	Buildings and Grounds	19,946.42	20,060.00
	Collections	6,397.43	7,400.00
	Development	5,168.76	3,660.00
	Insurance	12,379.00	12,500.00
	Membership	1,130.89	1,540.00
	Net Payroll	44,946.30	63,359.55
	Payroll Taxes	10,936.53	12,443.30
	Programs/Education	7,276.42	8,700.00
	Salem Literary Award	83.41	100.00
	Utilities	9,308.38	10,500.00
Total Expense		135,196.33	159,262.85
Net Operating Income		\$ 14,585.30	\$ 889.15

Restricted Funds Statement

Income		
	Collections—Restricted	\$ -
	ECCF Grants	2,000.00
	Fund-a-Need	870.00
	Adopt-a-Book	10,614.00
Total Income		13,484.00
Expense		
	Collections—Restricted	2,839.00
	Fund-a-Need	2,086.84
	ECCF Grants	2,000.00
	Adopt-a-Book	950.91
	Restricted Funds Use	-
		\$ 7,876.75
Net Restricted Funds (Use) Excess		\$ 5,607.25

Note: Use of Restricted Funds often spans multiple fiscal years.

Donors

April 1, 2015 - March 31, 2016

The Athenæum is grateful for the generous support of all our donors!
Donations listed below do not include annual membership/assessments.

Hawthorne Circle Giving

\$2500+

Robert E. Levin, *in memory of*
Karen N. Levin
Daniel C. Randall and Phillip Gillespie

\$1000-2499

Brunonia Barry and Gary Ward
Dorothy and Hale Bradt
Steve and Darcy Immerman
Meg Twohey and Darrow Lebovici
Mathew Whitlock and Penelope Neal
David and Sharon Williams

\$500-999

Anonymous, *in memory of*
Mr. Stephen Phillips
Mary Costello
Magdalene Cullen
Mr. and Mrs. Brenton H. Dickson
David Hart and Barbara Cleary
Scott Guthery
Christopher Hyland
Owen and Eileen Mathieu
Mr. and Mrs. Joseph Pyfrin
Sue Weaver Schopf
Mary S. Simpson and Wayne Sousa
Stanley and Jody Smith
Paul K. Soucy
Mr. and Mrs. Willis Stinson, III
John Endicott Birdseye Weil

\$100-499

Anonymous, *in memory of*
Alan R.B. Collachicco
James and Claire Bailey
Jeff Barz-Snell and Jennifer Barz

Jeffrey P. Beale
Ellen Brandenburg, *in memory of*
George Brandenburg
John F. Casey and Paul J. Pinto
Mr. Stephen H. Clark
Peter A. Copelas
Jannette and Rafael Crespo
Dickens Fellowship, North of Boston Branch
Tom and Pam Gaither, *in honor of*
Helen Harris
Mr. and Mrs. George Gearhart
Debra Glabeau and Ken Harris
Bruce Goddard and John Casey
Alice Goldsmith
Richard and Joan Hannah
Sarah Harrington
Annie Harris and Andy Lippman
Ronald B. and Mary Jane Harrison, *in honor*
of Miss Lauren Grosshans
Sandra Heaphy
Marie Heinz, *in memory of*
George D. Heinz
David and Jeannine Helen
Timothy and Joanie Ingraham
Meghan Jendrysik
Tim and Linda Dini Jenkins
Dana P. Jordan
Francie King and Robert Erbetta, *in honor*
of Meg Twohey
Laurie LaChapelle and David Leach
Laura Luckey
Edith Luray and Richard L. Lehman
Thomas Monroe
Nancy Lutts
Timothy and Julie Shaw Lutts
Robert and Barbara Maier
Alexander Marks and Kim Tompkins
Mr. and Mrs. Frederick D. Mason, III
Mr. and Mrs. Francis T. Mayo
Carolyn and Joe McGuire
Peter and Betsy Merry, *in honor of*
Sue Schopf

Robert Mulligan
Lynn Murray
Carole O'Blenes
Patrick and Joan Padden
Pickering Foundation
Rebecca Putnam and Will Peck
Salem Wine Imports
Mr. and Mrs. Michael Schaefer
David Shayeb
Victoria and Louis Sirianni
Charles and Donna Thorland
Barbara Timmons
Mr. and Mrs. William Tinti
Chuck and Elaine von Bruns
Angela Williams and Charles Swift

Up to \$99

Anonymous
Anonymous
Craig Barrows and Nine V. Cohen
John R. and Judy Wang Bedell
Wendy Biggs
Richard Boardman
Stephanie Buck and Matthew Phillion
Kevin and Elizabeth L. Carey, *in memory of*
Dorothy R. Carey
Peter Copelas and Krissta King
Dr. James J. Corbett
Hannah Diozzi
Debrah Glasser
John Hermanski and Barbara Taylor
David and Nina Hutchison, *in honor of Jody*
and Stanley Smith
Carl Hyam
Rich Jagolta
Mr. and Mrs. Richard Jendrysik
Jim and Judy Kearney
Michaeline La Roche and Robert Ouellette
Donna Mayers
Darleen Melis and Irving Ingraham
Dr. Georgia Montouris
Donald E. Nutting
Katharine Pickering
Denise Regan and Chris Burke
William Sano
Mr. and Mrs. Brian Shaughnessy
Joycelyn Snell

Carol Solomon and Karl Scheuerman
Sarah Staats
Liz Vago
Katherine A. van Dyke

Fund-A-Need

James and Claire Bailey
Mr. and Mrs. Brenton H. Dickson
John J. Fifield
Tom and Pam Gaither
David and Jeannine Helen
Steve and Darcy Immerman
Rich Jagolta
Tim and Linda Dini Jenkins
Meg Twohey and Darrow Lebovici
Richard L. Lehman
Carol Solomon

Corporate Sponsors

Story Sponsors, \$1000

Boston Private Wealth
Salem Five Charitable Corporation

Crowninshield Sponsors, \$500

Beverly Bank
Soucy Insurance Agency

Grants

Essex County Community Fund
Fund for Nonprofit Excellence Grant Award

Matching Gifts

Loring, Wolcott & Coolidge Trust
United Technologies

New Shareholders

Magdalene Cullen
Scott Guthery
Christopher Hyland
Owen and Eileen Mathieu

Adopt a Book

Anonymous
Donna Albino
Dorothy and Hale Bradt
Mary Costello
Mr. and Mrs. Brenton H. Dickson
Mr. and Mrs. George Gearhart
Sarah Harrington
David Hart and Barbara Cleary
Sandra Heaphy
David and Jeannine Helen
Steve and Darcy Immerman
Meghan Jendrysik
Meg Twohey and Darrow Lebovici
Robert E. Levin, *in memory of*
Karen N. Levin
Laura Luckey
Nancy Lutts
Timothy and Julie Shaw Lutts
Robert and Barbara Maier
Mr. and Mrs. Francis T. Mayo
Carolyn and Joe McGuire
Robert Mulligan
Pickering Foundation
Mr. and Mrs. Joseph Pyfrin
Sue Weaver Schopf
Mary S. Simpson and Wayne Sousa
Mr. and Mrs. Willis Stinson, III
Barbara Timmons
Chuck and Elaine von Bruns
Angela Williams and Charles Swift
David and Sharon Williams

Last Drops of Summer

Tasting Contributors

All Fruit, Inc.
Cheese Shop of Salem
Flour(ish) Bake Shoppe
Pamplemousse
Rumson's Rum

Club Havana Sponsors

Steve and Darcy Immerman
Meg Twohey and Darrow Lebovici

Donations to the Club Havana

Silent Auction

Charlie Allen
Katy Bratun
Jannette Crespo
Ken Harris
Owen and Eileen Mathieu
Carolyn and Joe McGuire
Salem Five
Racket Shreve
Matoria Usovicz

In Kind

Rum for Club Havana party
Deacon Giles Distillery
Untitled oil painting by Gustave Courbet
Thomas Forest Farb-Horch
Arbres Au Bord de L'Étang A Ville-D'Avray by
Jean-Baptiste-Camille Corot
Peter Valhouli-Horch
Gift certificate for Garden Party auction
Firenze
Entertainment for Pirate Revels
Ken Harris
Bird bath for garden
Mr. and Mrs. Richard Jendrysik
Dreaming of Italy basket for auction
Linda Dini Jenkins
Speaker accommodations
Salem Inn
Security Camera Equipment
Setronics
Exhibit supplies
Elaine von Bruns
Photography at Garden Party and Club Havana
16 Degrees Studios
Yoga instruction
Victoria Nadel

Subscriptions

Christian Science Monitor
Christian Science Reading Room
Swampscott
GRANTA
Marie Heinz

Accuracy is important to us! If you find any errors or omissions, please contact us.

Books Given by the Author

The Unraveling of Mrs. Noland by Sue Ann Connaughton

Your Lover's Beloved: 51 Ghazals by Hafiz
(donated by Mahmood Karimi-Hakek and Bill Wolak, translators)

Wilber's War: An American Family's Journey Through World War II by Hale Bradt

Light, Descending by Octavia Randolph

The Time Opener, 1692 by J. L. Tracy, Jr.

Henry Beston's Cape Cod: How the "Outermost House" Inspired a National Seashore by Don Wilding

Love Opens the Hands: New and Selected Poems by Bill Wolak

Programming Partners

Cambridge Society for Early Music

Dickens Fellowship, North of Boston Branch

Grub Street

Historic Salem, Inc.

Salem Wine Imports

Salem Literary Festival

Salem Sons of Italy Veturia Romana Lodge

Salem State University

Salem YMCA

Theatre of Words and Music

Large Donations of Books for the Annual Sale

James Corbett

Estate of Arthur Errion

Thomas Forest Farb-Horch

Lis and Len Horowitz

Steve and Darcy Immerman

Darrow Lebovici

James H. Lenden

Richard Luecke and Perry McIntosh

Joe Pyfrin

Patricia S. Roka and H. Jeffrey Brandt

Louis Sirianni

Joan Thayer

Sarah L. Thayer

Linn Torto

Win Wilkens



Groups and Programs Hosted at the Salem Athenæum

The Athenæum offers special interest groups and also opens the Athenæum to local and regional organizations who meet or host events in our building.

Athenæum Groups

Athenæum Book Group

La Tertulia, Spanish language group

Monday Evening Conversations

(new group started July 2015)

Open Studio for Writers

Re-appraisal Reading Circle

Scrabble Club

Local Groups/Organizations

Dickens Fellowship North of Boston

Federal Street Neighborhood Assoc.

Historic Essex Street Neighborhood Assoc.

Incessant Pipe Poetry Salon

North Shore International Poetry Salon

Panda Land, Mandarin Chinese for Children

Rebel Shakespeare

Salem Writers' Group

Scribbler's Ink Prompt Writing Workshops

Committees

Meg Twohey and Jean Marie Procius are ex officio members of all committees

Building & Grounds

David Hart & Dick Jendrysik – Co-chairs, building

Pam Jendrysik – Chair, grounds

Darrow Lebovici, Arthur Sullivan, David Williams

Collections

Marla Gearhart – Chair

Donna Albino, Erik Bauer, Wendy Biggs,

Melissa Ludden Hankens, Elaine von Bruns

Adopt-a-Book: Sarah Harrington & Donna Seger – Co-Chairs

Communications

Ken Harris – Chair

Steve Immerman, Carolyn McGuire – newsletter & social media

Cultural Programs: Lectures, Courses & Music

Ken Harris – Chair

Genevieve Gilson, Shelby Hypes,

Judy Kearney, Kathy Miles, Sue Schopf, consulting

Development

Stephanie Buck & Steve Immerman – Co-Chairs

Francie King, Owen Mathieu, Carlotta Tyler

Finance

Angela Williams – Chair

Pat Padden – Treasurer

Sandy Dickson, Steve Immerman, Tim Jenkins, Michael Schaefer, Chuck von Bruns

Governance

Governance & Nominating: Angela Williams & Steve Immerman – Co-Chairs

Ken Harris, Dick Jendrysik,

Executive: Meg Twohey, Ken Harris, Pat Padden, Stephanie Buck,
with Executive Director Jean Marie Procius

Membership

Wendy S. Biggs – Chair

Abby Burns, Richard Fubel, Jeannine Helen, Patti O'Neil

Writers

Brunonia Barry & J.D. Scrimgeour – Co-chairs

Shari Caplan, Shari Frost, Katherine Bygrave Howe,

Lisa Jendrysik, Matthew Phillion, Peter Sampieri

Volunteers

The tireless efforts of all the Committee members, Trustees, and staff mentioned throughout this report are vitally supported by talented and generous volunteers. Your dedication sustains the Salem Athenæum. Thank you.

Wasim Altaf
Judy Bedell
Gerard Bras
Marie Brescia
Danielle Capalbo
John Casey
Stephen Clark
Roberta Clement
Naomi Cottrell
Caroline Cox
Jann Crespo
Magdalene Cullen
Maureen Dalton
Betsy Dickson
Jennifer Firth
Lynn Fletcher
Scott Francis
Richard Fubel
Jonquil Furse
George Gearhart
Connie Gephart
Elaine Gardine
Debra Glasser
Mary Jane Harrison

Ron Harrison
Sandy Heaphy
David Helen
John Hermanski
Dana Hernandez
Ted Jendrysik
Megan Jendrysik
Linda Jenkins
Jim Kearney
Maryann L'Heureux
Barrie Levine
Laura Luckey
Tim Lutts
Joe McGuire
Marie Meegan
Catherine Miller
Lynn Murray
K.K. Nielsen
Anne Nigro
John Owen
Will Peck
Karen Pelletier
Paul Pinto
Becky Putnam

Lynda Pyfrin
Dan Randall
Paul Redmond
Tilda Reider
Betsy Ricciarelli
Patti Roka
Julie Rose
Martha Shreve
Bonnie Hurd Smith
Jody Smith
Stanley Smith
Carol Solomon
Ann Sousa
Gus Sousa
Ann Sullivan
Charles Swift
Barbara Taylor
Nancy Ten Broeck
Barbara Timmons
Jane Wall
Tracy Ware
Sarah Wheeler-Gaddipati
Amy Whelan
Sharon Williams



Library Volunteers

Special recognition is in order for those who volunteer on a weekly basis.
Thank you for your dedication!

Evelin Barry
Wendy Biggs
Anna Brandenburg
Phil Dwight
Marla Gearhart
Peter Little
Elaine von Bruns

Salem Athenæum

337 Essex Street
Salem, Massachusetts 01970

For general information about the Athenæum or its
events, please contact the Executive Director:

Jean Marie Prociou
978-744-2540
info@salemathenaeum.net